

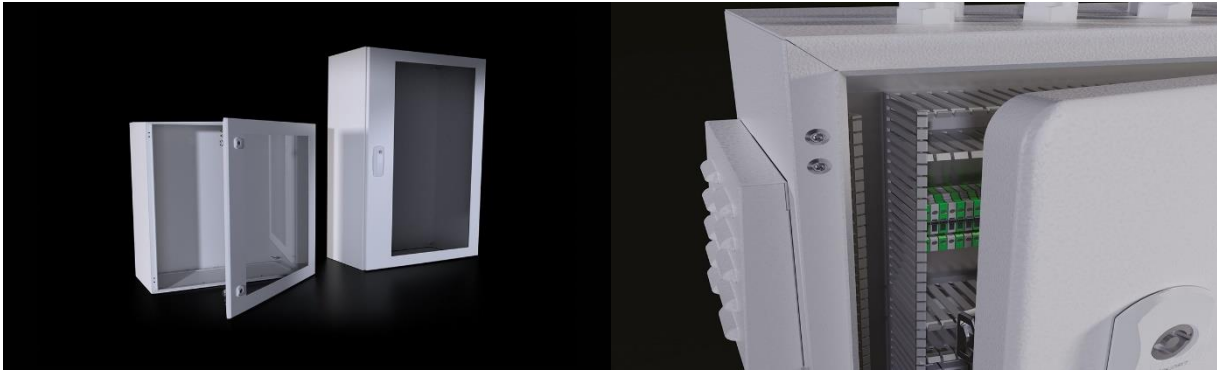
DM Medium Glazed Door Enclosure

Product Information

| PRODUCT CODE | W* (mm) | H* (mm) | D* (mm) | WEIGHT (kg) | M/P W* (mm) | M/P H* (mm) | BODY THICKNESS (mm) | DOOR THICKNESSES (mm) | COVER | HINGE (pcs) | VERSION |
|--------------|---------|---------|---------|-------------|-------------|-------------|---------------------|-----------------------|-------|-------------|---------|
| DM 274.630 | 400 | 600 | 300 | 14,23 | 350 | 575 | 1,2 | 1,2 | 2 | 2 | 1 |

Product Features

| | |
|--------------------------|---|
| MATERIALS | Body, Front Door, Gland Plate Mild Steel, 4-mm Transparent Tempered Glass |
| SURFACE FINISHING | Iron-phosphate, Electrostatic powder coating RAL 7035 |
| IP RATE | IEC EN 60529 IP66 |
| NEMA RATE | NEMA 4 |
| STANDARTS | IEC 62208 (Enclosure Standards) |
| CORROSION RATE | C3-M based on TS EN ISO 12944-2 |
| WARRANTY | KYT-72 |
| SUPPLY INCLUDES | Body, Glazed Hinged Door, Gland Plate, Assembly Parts |



www.tekpan.com.tr/

TEKPAN TEKNİK ELEKTRİK KUMANDA PANO SANAYİ VE TURİZM TİCARET ANONİM ŞİRKETİ
Halilbeyli Osb Mah, Tekpan Fabrika, Parsa Cad No:2/1 Kemalpaşa, İzmir / TÜRKİYE

Tel: +90 232 877 18 77

Fax: +90 232 877 13 48