

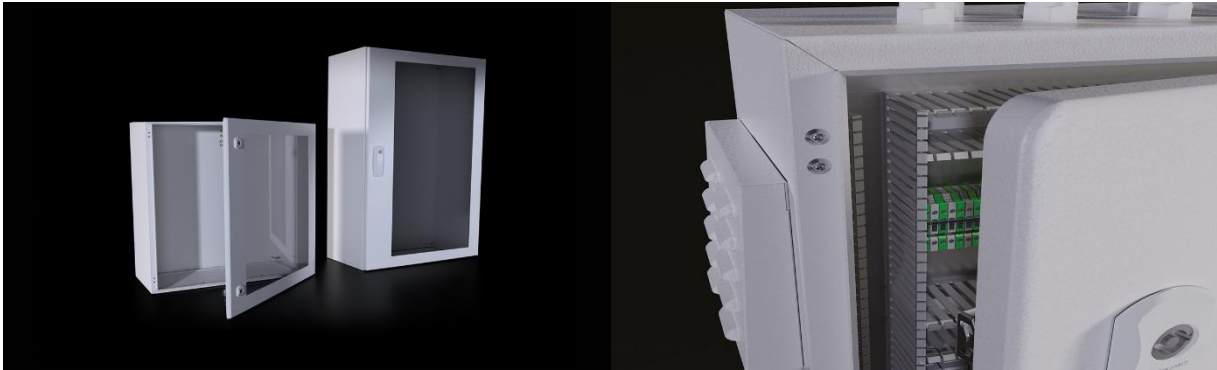
# DM Medium Glazed Door Enclosure

## Product Information

PRODUCT CODE	W* (mm)	H* (mm)	D* (mm)	WEIGHT (kg)	M/P W* (mm)	M/P H* (mm)	BODY THICKNESS (mm)	DOOR THICKNESSES (mm)	COVER	HINGE (pcs)	VERSION
DM 274.621	400	600	210	10,73	350	575	1,2	1,2	2	2	1

## Product Features

<b>MATERIALS</b>	Body, Front Door, Gland Plate Mild Steel, 4-mm Transparent Tempered Glass
<b>SURFACE FINISHING</b>	Iron-phosphate, Electrostatic powder coating RAL 7035
<b>IP RATE</b>	IEC EN 60529 IP66
<b>NEMA RATE</b>	NEMA 4
<b>STANDARTS</b>	IEC 62208 (Enclosure Standards)
<b>CORROSION RATE</b>	C3-M based on TS EN ISO 12944-2
<b>WARRANTY</b>	KYT-72
<b>SUPPLY INCLUDES</b>	Body, Glazed Hinged Door, Gland Plate, Assembly Parts



[www.tekpan.com.tr/](http://www.tekpan.com.tr/)

TEKPAN TEKNİK ELEKTRİK KUMANDA PANO SANAYİ VE TURİZM TİCARET ANONİM ŞİRKETİ  
Halilbeyli Osb Mah, Tekpan Fabrika, Parsa Cad No:2/1 Kemalpaşa, İzmir / TÜRKİYE

Tel: +90 232 877 18 77

Fax: +90 232 877 13 48