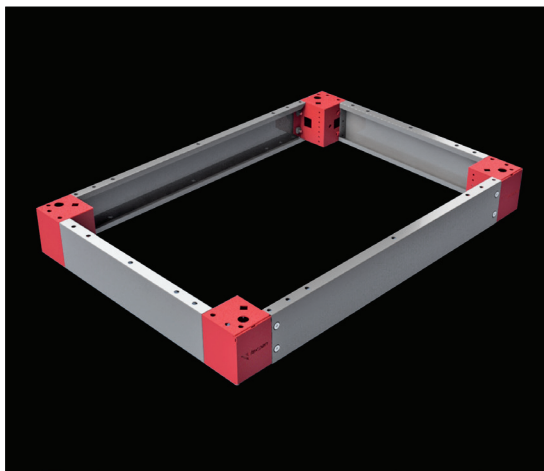


PLINTH CORNER PART



Relevance : TEOS, NEO Modular, NEO Monoblock, NEO HC Modular, NEO HC Monoblock

Related size : PLINTH HEIGHT

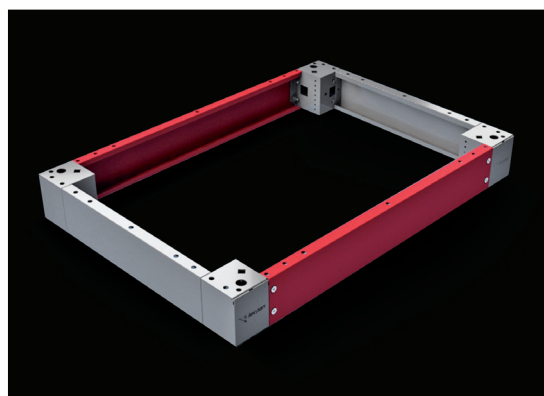
Material : Corner part : 2,00 mm galvanized steel + RAL 7012 powder-coating
Plastic Panel : RAL 7012 ABS Plastic

Supply Includes : 4 pcs 100 mm or 200 mm high plinth corner part, 4 pcs plastic panel and mounting parts

NOTE : Please see page 154-155 for plinth accessories.

PRODUCT CODE	TEOS PLINTH HEIGHT (mm)
708.100	100
708.200	200

PLINTH FRONT COVERS



Relevance : TEOS, NEO Modular, NEO Monoblock, NEO HC Modular, NEO HC Monoblock

Related size : ENCLOSURE WIDHT

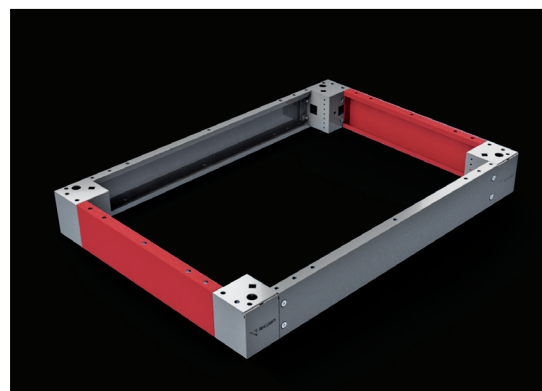
Material : 100 mm front plinth part: 1,50 mm galvanized steel + RAL 7012 powder-coating

Supply Includes : 2 pcs 100 mm front plinth part and mounting parts

REQUIRED : 2 sets of front plinth panel group for 200 mm height plinths

PRODUCT CODE	ENCLOSURE WIDHT (mm)
709.140	400
709.160	600
709.170	700
709.180	800
709.100	1000
709.120	1200

PLINTH SIDE COVERS



Relevance : TEOS, NEO Modular, NEO Monoblock, NEO HC Modular, NEO HC Monoblock

Related size : ENCLOSURE WIDHT

Material : 100 mm side plinth part: 1,50 mm galvanized steel + RAL 7012 powder-coating

Supply Includes : 2 pcs 100 mm front plinth part and mounting parts

REQUIRED : 2 sets of front plinth panel group for 200mm height plinths

PRODUCT CODE	ENCLOSURE WIDHT (mm)
710.140	400
710.150	500
710.160	600
710.180	800
710.100	1000