

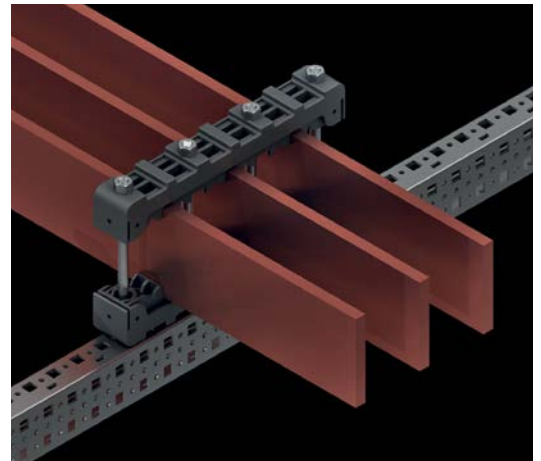
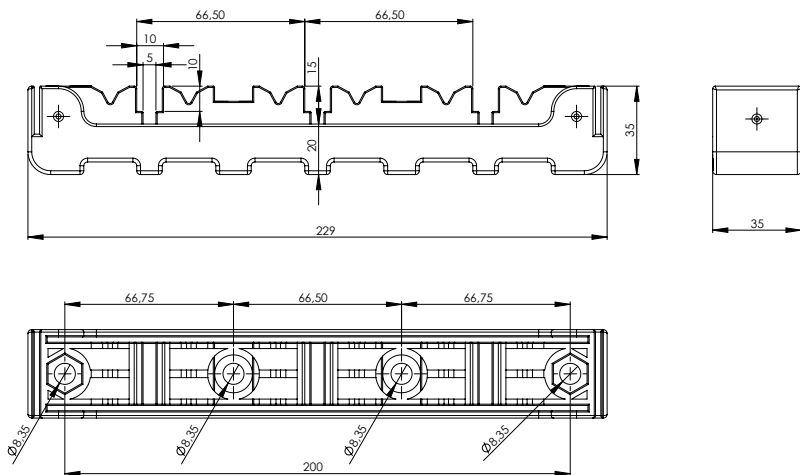
Material : Polyamide glass fibre reinforced.

Supply Includes : 2 pcs busbar support and combination screws.

Product Code : 600.002 (1 set: 2 pcs)

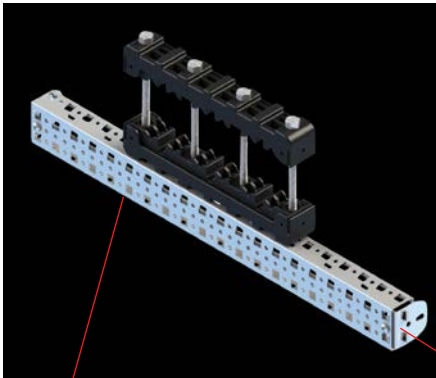
- The busbar supports can be adjusted with 25mm steps.
- Easy mounting
- Cost-effective solution

- Operating range between -40 oC and + 130 oC
- Halogen-free
- Fire protection in line with UL 94 VO standard.
- 4 screw fastening.
- Applicable to 5-10mm busbar cross-sections.
- Applicable to size 25-120 mm busbar.
- Can be used in applications between 250 A - 1600 A.
- Suitable for 3 phase application.



COMPACT BUSBAR SUPPORT

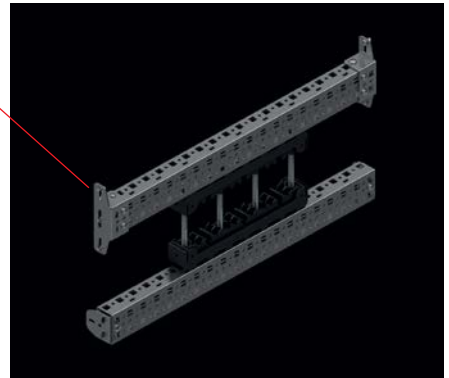
APPLICATION - 1



○ 50x25 Scissile Rail page 167

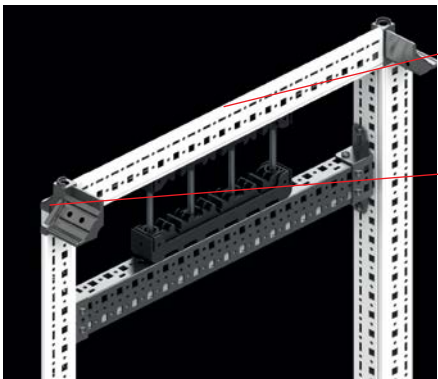
○ Plug-in Rail Bracket, page 169

APPLICATION - 2



○ Adjustable Rail Bracket, Type T, page 170

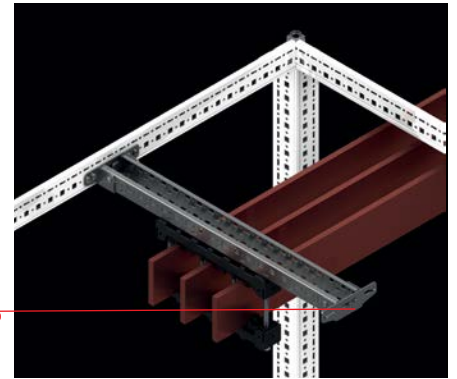
APPLICATION - 3



○ M6 Hide Nut Page 259

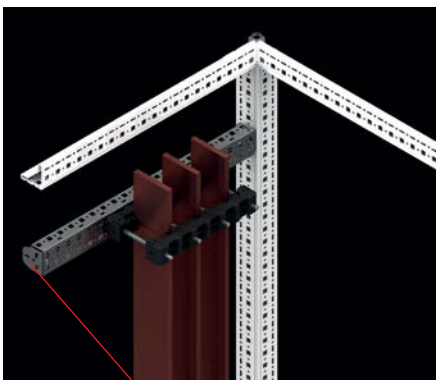
○ Adjustable Rail Bracket, Type T, page 170

APPLICATION - 4



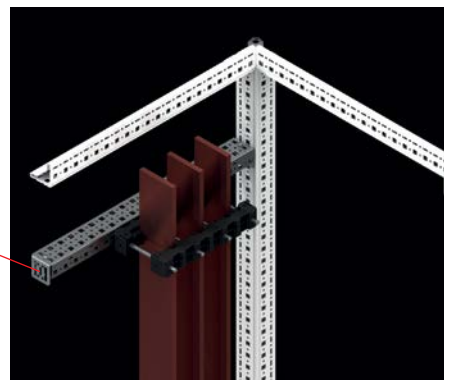
○ Adjustable Rail Bracket, Type T, page 170

APPLICATION - 5



○ Plug-in Rail Bracket page 169

APPLICATION - 6



○ Adjustable Rail Bracket, Type L, page 171